

Fan types JK-30MT - JK-100MT

Technical catalogue: Fan systems
 Section: 05
 Page: 1/9
 Revised: 01.04.2005

The indirect drive centrifugal fan types JK-30MT - JK-100MT are designed for transport of clean air.

Equipped with self-cleaning impellers with backward-inclined blades and aerodynamic intake. The impellers are statically and dynamically balanced.

The pulleys are shaft-mounted with taperlock bushing, allowing easy replacement for changed fan speed.

Max. operating temperature: 60°C

With cooling wings: Up to 200°C

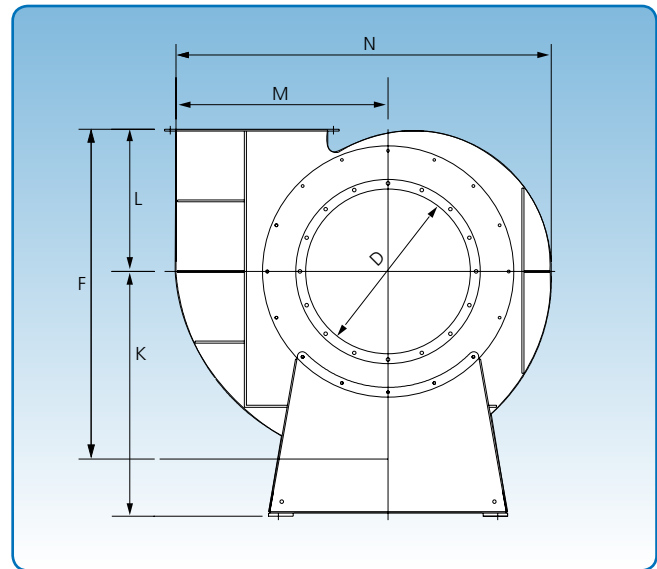
Available in anti-spark version with stainless steel inlet and explosion-proof (Eex) motor.

Dimensions (D) for the inlet are external. Supplied with flange as standard.

Belt drive is anti-static.

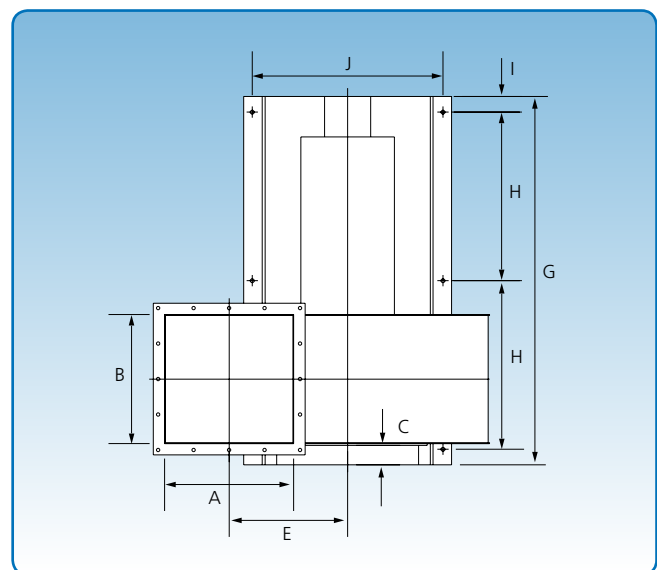
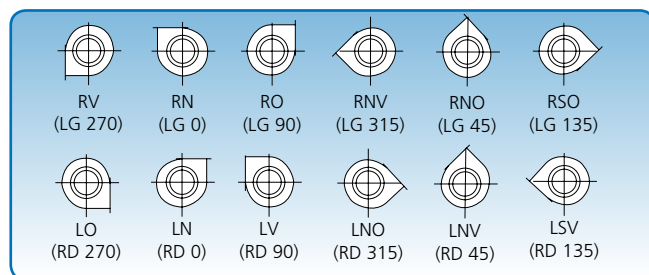
Specific dimensions for outlet and inlet flanges can be found under "Flanges".

The technical data for each type appears on the following pages.



Steel plate dimensions in mm

Type	JK-30MT - JK-60MT	JK-70MT - JK-90MT	JK-100MT
Impeller - standard	3	4	5
Fan housing - standard	3	3	3



6 positions. The position illustrations are viewed from the inlet side.

Type	Dimensions														Weight without motor kg
	A mm	B mm	C mm	D mm	E mm	F mm	G mm	H mm	I mm	J mm	K mm	L mm	M mm	N mm	
JK-30MT	250	250	75	300	318	650	880	370	55	430	550	275	450	775	142
JK-40MT	350	350	75	400	368	775	1128	494	55	550	650	325	550	925	226
JK-50MT	455	455	75	500	418	1000	1328	587	55	672	750	436	650	1150	343
JK-60MT	505	505	75	600	543	1186	1563	700	59	825	955	486	800	1400	554
JK-70MT	605	605	75	700	593	1360	1895	855	70	850	1125	566	900	1570	703
JK-80MT	705	705	75	800	643	1490	1995	905	70	850	1125	625	1000	1727	788
JK-90MT	805	805	75	900	723	1670	2310	1030	100	1070	1325	700	1130	1940	1189
JK-100MT	905	905	75	1000	793	1865	2410	1080	100	1070	1425	770	1250	2175	1295

Fan type JK-30MT

Technical data

Technical catalogue: Fan systems
 Section: 05
 Page: 2/9
 Revised: 01.04.2005

Motor: IP 55

Supplied with the following motors:

kW	hp	amp.	Weight of motor kg
3,0	4,0	6,1	28
4,0	5,5	7,7	39
5,5	7,5	11,1	43
7,5	10,0	14,7	49

Max. RPM:

Standard impeller: 3,575 RPM

Operating range:

Air volume: 2,500 – 8,000 m³/h

Pressure: 80 – 370 mm WG

Power supply:

400 V - 50 Hz.

Construction:

B3 - motor mounted on foot.

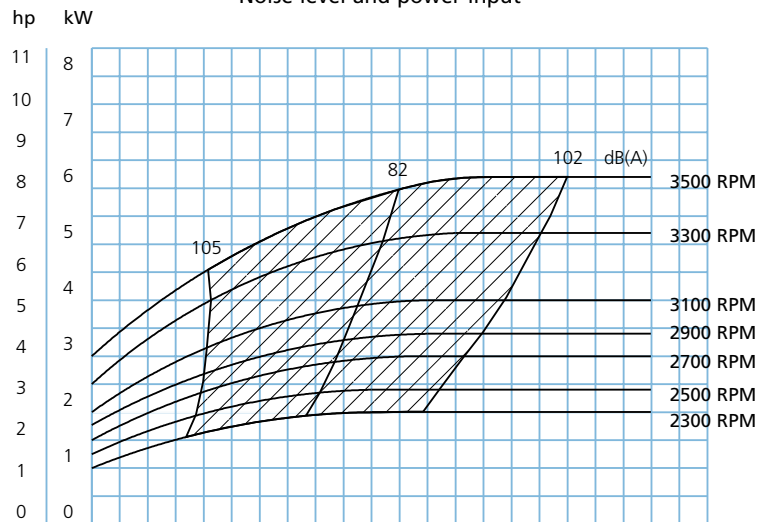
Impeller:

No. of blades, standard: 8 pcs.

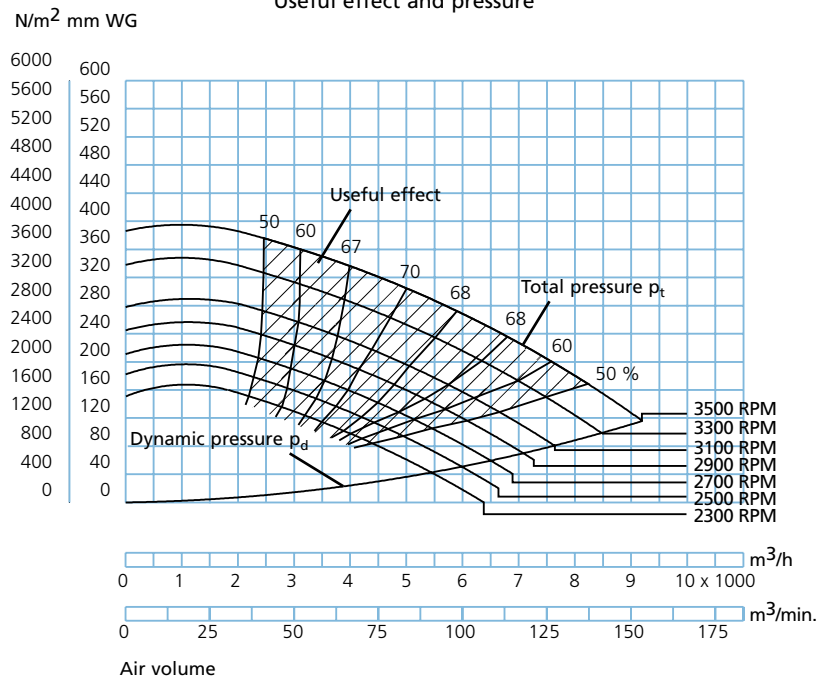
Diameter: ø405 mm

Height: 169 mm

Noise level and power input



Useful effect and pressure



Fan type JK-40MT

Technical data

Technical catalogue: Fan systems
 Section: 05
 Page: 3/9
 Revised: 01.04.2005

Motor: IP 55

Supplied with the following motors:

kW	hp	amp.	Weight of motor kg
5,5	7,5	11,1	43
7,5	10,0	14,7	49
11,0	15,0	21,2	69
15,0	20,0	28,2	83
18,5	25,0	34,4	87

Max. RPM:

Standard impeller: 3,435 RPM

Operating range:

Air volume: 4,500 – 17,000 m³/h

Pressure: 100 – 450 mm WG

Power supply:

400 V - 50 Hz.

Construction:

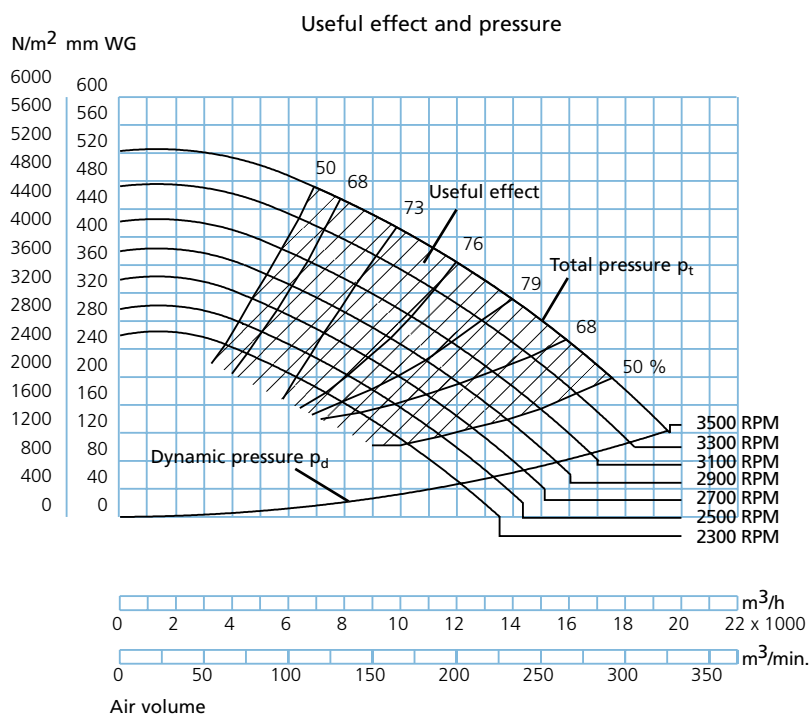
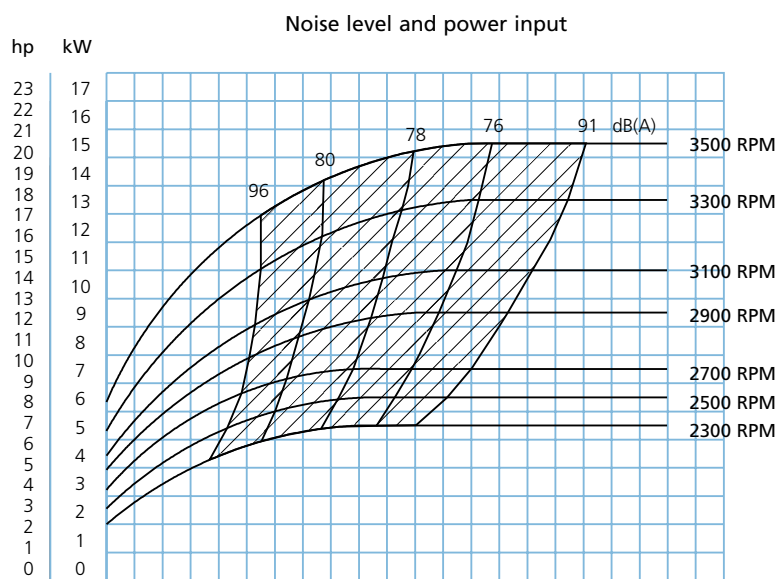
B3 - motor mounted on foot.

Impeller:

No. of blades, standard: 8 pcs.

Diameter: ø505 mm

Height: 209 mm



Fan type JK-50MT

Technical data

Technical catalogue: Fan systems
 Section: 05
 Page: 4/9
 Revised: 01.04.2005

Motor: IP 55

Supplied with the following motors:

kW	hp	amp.	Weight of motor kg
11,0	15,0	21,2	69
15,0	20,0	28,2	83
18,5	25,0	34,4	87
22,0	30,0	40,0	165
30,0	40,0	52,5	240

Max. RPM:

Standard impeller: 2,450 RPM

Operating range:

Air volume: 6,000 – 28,000 m³/h

Pressure: 120 – 520 mm WG

Power supply:

400 V - 50 Hz.

Construction:

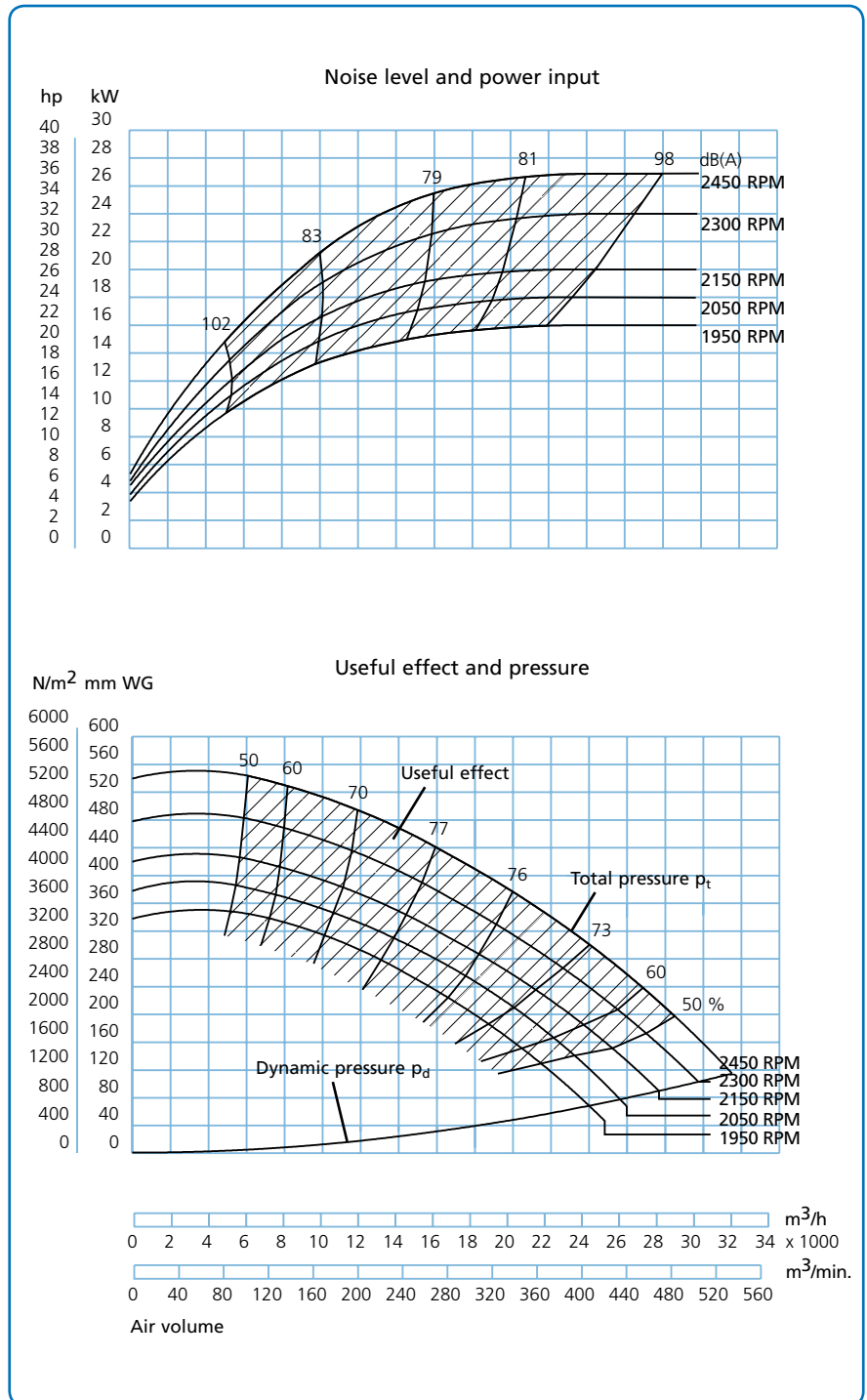
B3 - motor mounted on foot.

Impeller:

No. of blades, standard: 8 pcs.

Diameter: ø705 mm

Height: 243 mm



Fan type JK-60MT

Technical data

Technical catalogue: Fan systems
 Section: 05
 Page: 5/9
 Revised: 01.04.2005

Motor: IP 55

Supplied with the following motors:

kW	hp	amp.	Weight of motor kg
22,0	30,0	40,0	165
30,0	40,0	52,5	240
37,0	50,0	67,0	300
45,0	62,0	80,0	330

Max. RPM:

Standard impeller: 2,350 RPM

Operating range:

Air volume: 9,000 – 39,000 m³/h

Pressure: 160 – 600 mm WG

Power supply:

400 V - 50 Hz.

Construction:

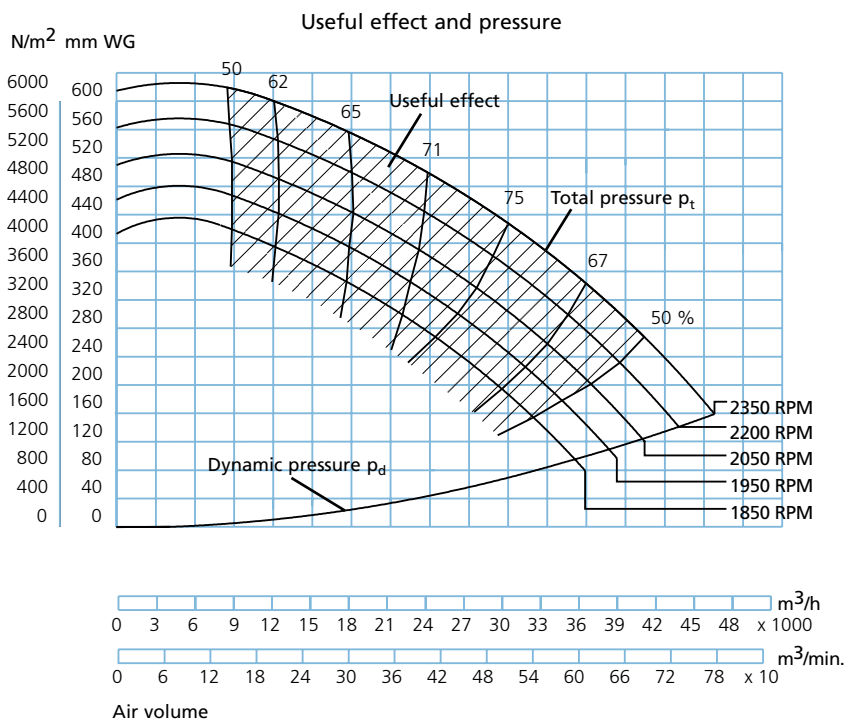
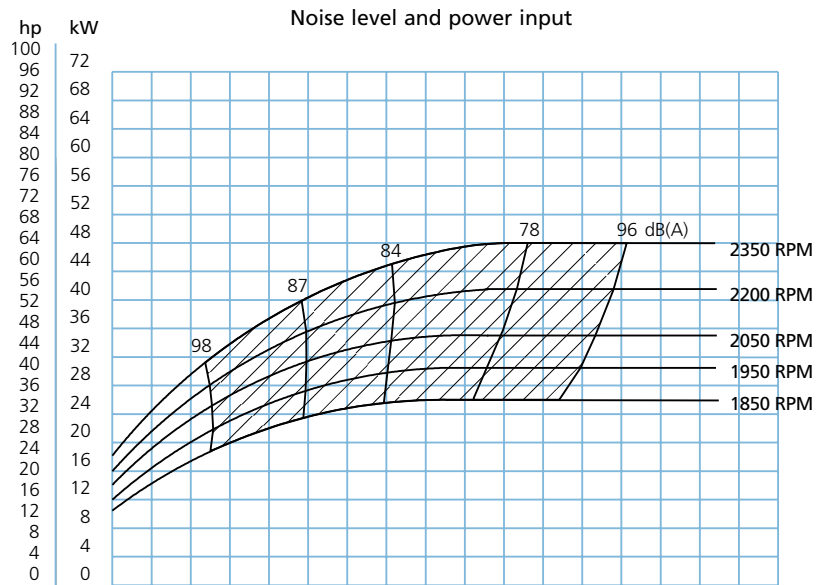
B3 - motor mounted on foot.

Impeller:

No. of blades, standard: 8 pcs.

Diameter: ø805 mm

Height: 285 mm



Fan type JK-70MT

Technical data

Technical catalogue: Fan systems
 Section: 05
 Page: 6/9
 Revised: 01.04.2005

Motor: IP 55

Supplied with the following motors:

kW	hp	amp.	Weight of motor kg
30,0	41,0	53,0	230
37,0	50,0	67,0	300
45,0	62,0	80,0	330
55,0	75,0	97,0	435
75,5	103,0	133,0	610

Max. RPM:

Standard impeller: 2,050 RPM

Operating range:

Air volume: 12,000 – 54,000 m³/h

Pressure: 150 – 600 mm WG

Power supply:

400 V - 50 Hz.

Construction:

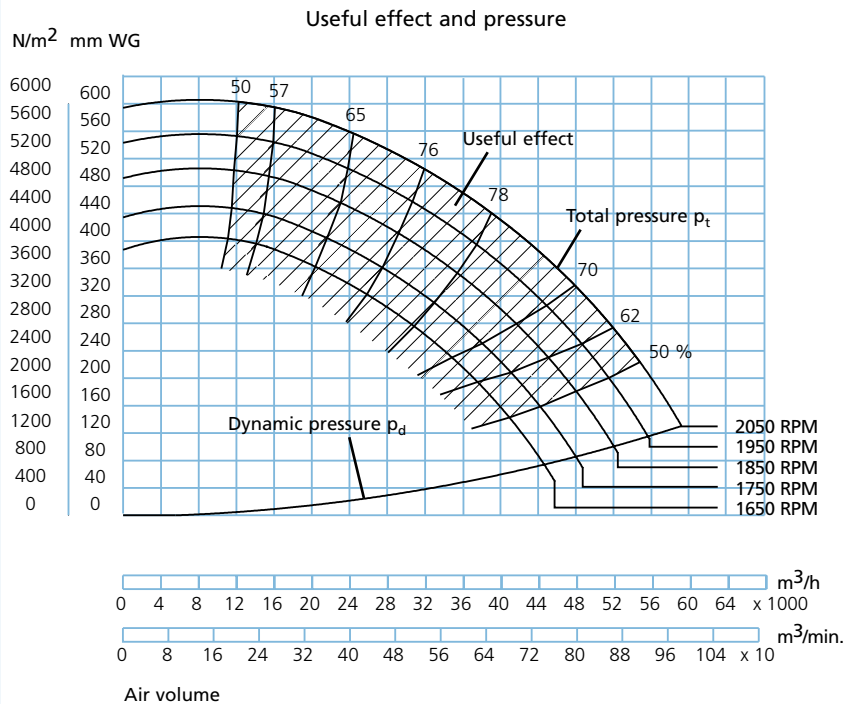
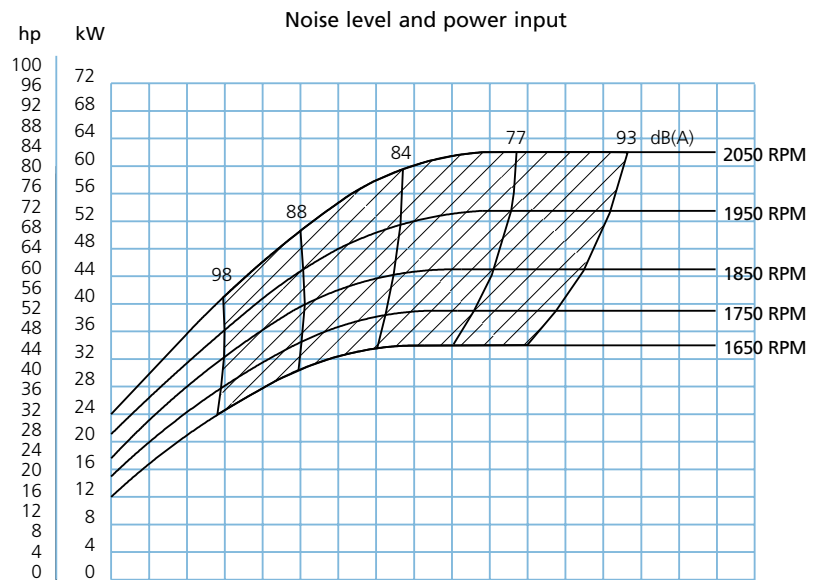
B3 - motor mounted on foot.

Impeller:

No. of blades, standard: 8 pcs.

Diameter: ø905 mm

Height: 315 mm



Fan type JK-80MT

Technical data

Technical catalogue: Fan systems
 Section: 05
 Page: 7/9
 Revised: 01.04.2005

Motor: IP 55

Supplied with the following motors:

kW	hp	amp.	Weight of motor kg
37,0	50,0	67,0	300
45,0	62,0	80,0	330
55,0	75,0	97,0	435
75,5	103,0	133,0	610
90,0	123,0	159,0	660

Max. RPM:

Standard impeller: 1,850 RPM

Operating range:

Air volume: 16,000 – 64,000 m³/h

Pressure: 160 – 560 mm WG

Power supply:

400 V - 50 Hz.

Construction:

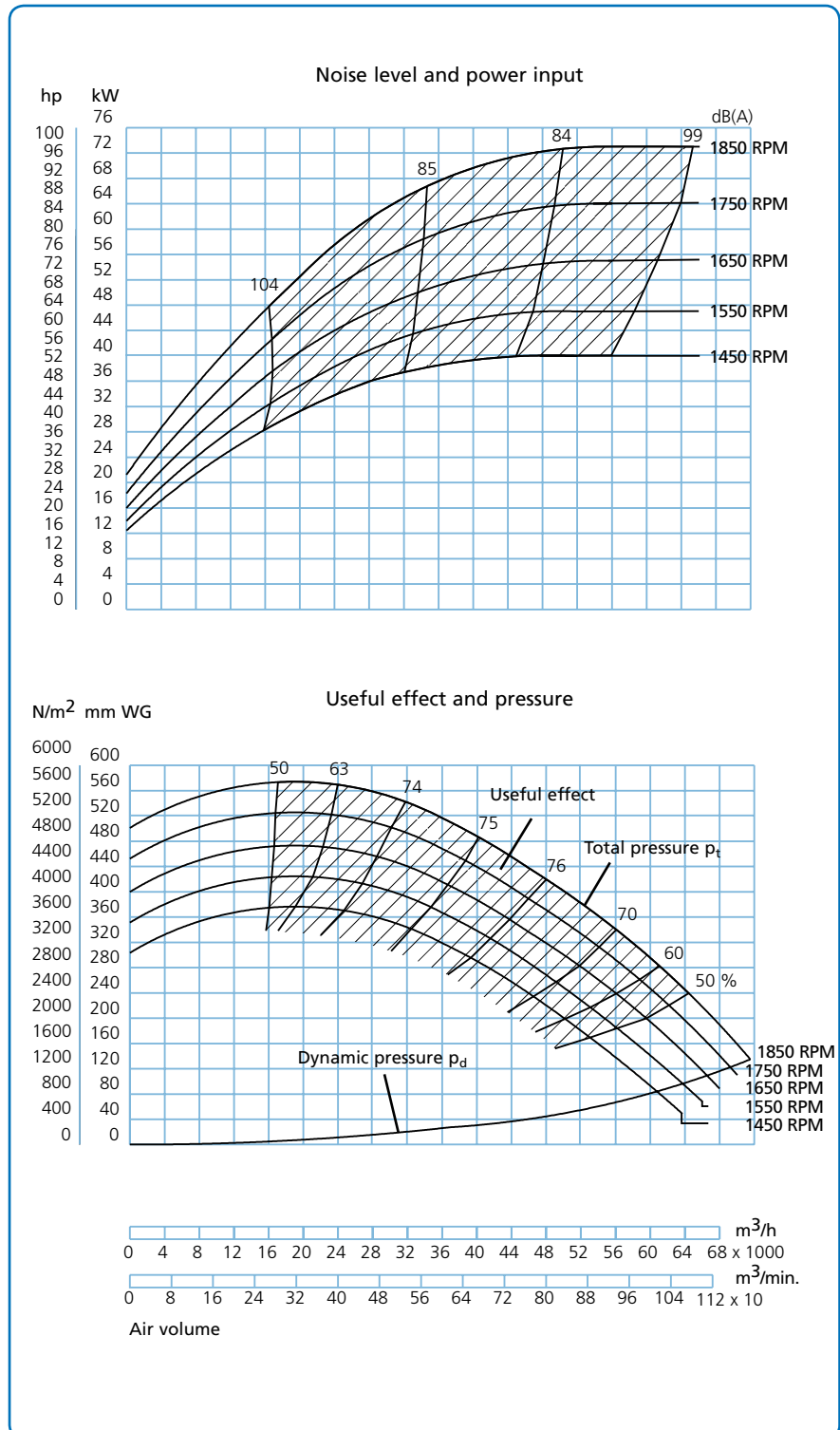
B3 - motor mounted on foot.

Impeller:

No. of blades, standard: 8 pcs.

Diameter: \varnothing 1007 mm

Height: 357 mm



Fan type JK-90MT

Technical data

Technical catalogue: Fan systems
 Section: 05
 Page: 8/9
 Revised: 01.04.2005

Motor: IP 55

Supplied with the following motors:

kW	hp	amp.	Weight of motor kg
45,0	62,0	80,0	330
55,0	75,0	97,0	435
75,5	103,0	133,0	610
90,0	123,0	159,0	660
110,0	151,0	195,0	830

Max. RPM:

Standard impeller: 1,650 RPM

Operating range:

Air volume: 25,000 – 80,000 m³/h

Pressure: 150 – 560 mm WG

Power supply:

400 V - 50 Hz.

Construction:

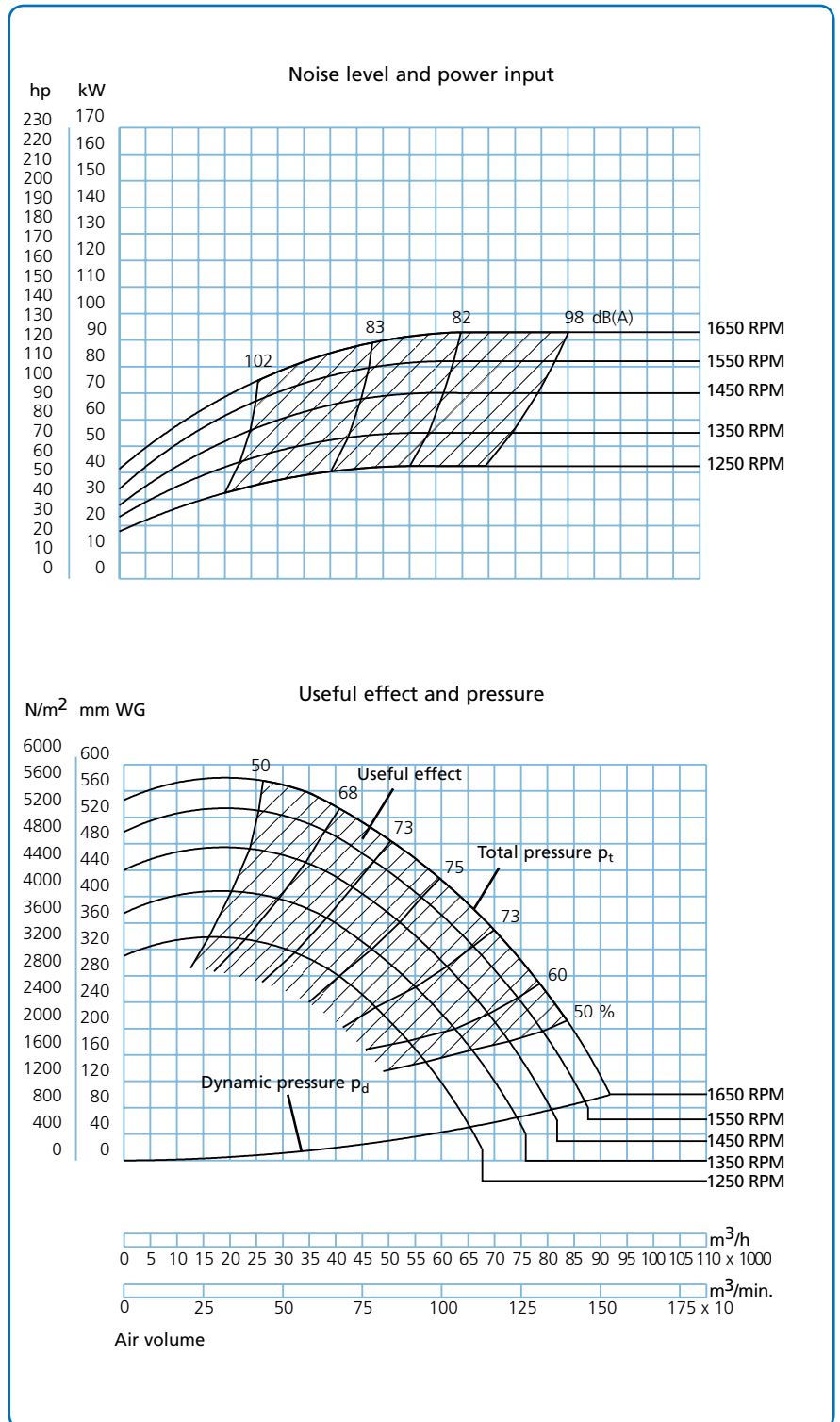
B3 - motor mounted on foot.

Impeller:

No. of blades, standard: 8 pcs.

Diameter: ø1127 mm

Height: 417 mm



Fan type JK-100MT

Technical data

Technical catalogue: Fan systems
 Section: 05
 Page: 9/9
 Revised: 01.04.2005

Motor: IP 55

Supplied with the following motors:

kW	hp	amp.	Weight of motor kg
55,0	75,0	97,0	435
75,5	103,0	133,0	610
90,0	123,0	159,0	660
110,0	151,0	195,0	830
132,0	180,0	232,0	910

Max. RPM:

Standard impeller: 1,550 RPM

Operating range:

Air volume: 25,000 – 115,000 m³/h

Pressure: 140 – 600 mm WG

Power supply:

400 V - 50 Hz.

Construction:

B3 - motor mounted on foot.

Impeller:

No. of blades, standard: 8 pcs.

Diameter: ø1257 mm

Height: 484 mm

